

Two at a time

Flute

The musical notation is in 4/4 time with a key signature of one flat (B-flat). The notes and rests are as follows:

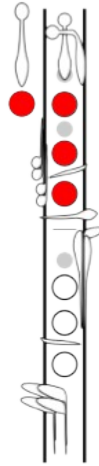
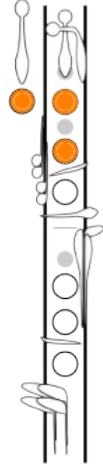
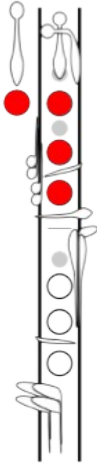
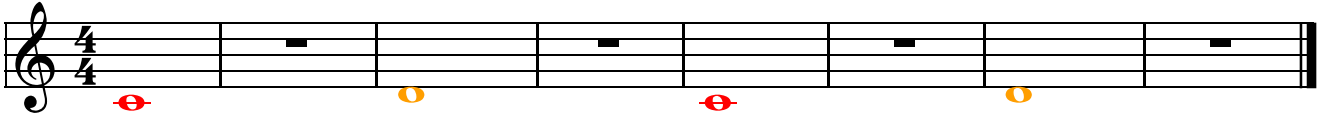
Measure	Notes
1	B-flat (red)
2	Rest, G (orange)
3	Rest, B-flat (red)
4	Rest, G (orange)
5	Rest

Below the staff are four diagrams of a flute, each with colored dots indicating finger positions for the notes in the first four measures:

- Diagram 1: Red dots on keys 1, 2, 3, 4, 5, 6, 7, 8, 9, 10, 11, 12.
- Diagram 2: Orange dot on key 2, red dots on keys 1, 3, 4, 5, 6, 7, 8, 9, 10, 11, 12.
- Diagram 3: Red dots on keys 1, 2, 3, 4, 5, 6, 7, 8, 9, 10, 11, 12.
- Diagram 4: Orange dot on key 2, red dots on keys 1, 3, 4, 5, 6, 7, 8, 9, 10, 11, 12.

Two at a time

Clarinet



Two at a time

Alto Sax

Musical staff for Alto Sax in 4/4 time, key of D major. The staff contains a sequence of notes: D4 (red), rest, E4 (orange), rest, D4 (red), rest, E4 (orange), rest.

Fingering diagram for the first note (D4) on the Alto Sax. The diagram shows the left hand with the index finger on the first key and the middle finger on the second key. The right hand has the index finger on the first key and the middle finger on the second key.

Fingering diagram for the second note (E4) on the Alto Sax. The diagram shows the left hand with the index finger on the first key and the middle finger on the second key. The right hand has the index finger on the first key and the middle finger on the second key.

Fingering diagram for the third note (D4) on the Alto Sax. The diagram shows the left hand with the index finger on the first key and the middle finger on the second key. The right hand has the index finger on the first key and the middle finger on the second key.

Fingering diagram for the fourth note (E4) on the Alto Sax. The diagram shows the left hand with the index finger on the first key and the middle finger on the second key. The right hand has the index finger on the first key and the middle finger on the second key.

Two at a time

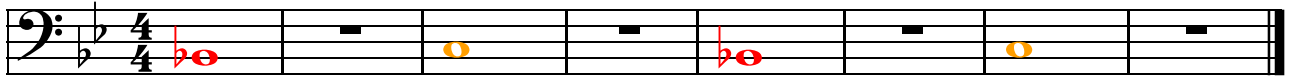
Trumpet

The image shows a musical staff for a Trumpet in 4/4 time. The staff contains four measures of music. The first measure has a whole note on G4 with a red '0' below it. The second measure has a whole note on B4 with an orange '13' below it. The third measure has a whole note on G4 with a red '0' below it. The fourth measure has a whole note on B4 with an orange '13' below it. Below the staff are four groups of three circles representing fingerings: three white circles under the first measure, and a sequence of orange, white, and orange circles under the second and fourth measures.

Measure	Note	Fingering
1	G4	0
2	B4	13
3	G4	0
4	B4	13

Two at a time

Trombone

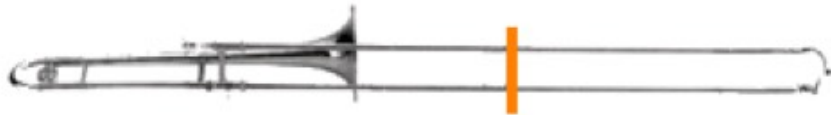


1

6

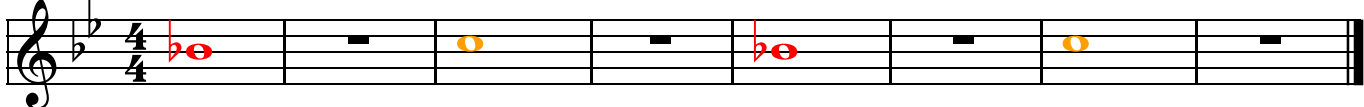
1

6



Two at a time

Bells



A musical staff in 4/4 time with a treble clef and a key signature of one flat (Bb). The notation consists of a sequence of notes and rests across eight measures. The notes are: Measure 1: Bb4 (red), G4 (black); Measure 2: F4 (black), E4 (yellow); Measure 3: D4 (black), C4 (black); Measure 4: Bb3 (red), A3 (black); Measure 5: G3 (black), F3 (black); Measure 6: E3 (black), D3 (yellow); Measure 7: C3 (black), Bb2 (black); Measure 8: A2 (black), G2 (black). The notes are placed on the staff lines: Bb4 on the 4th line, G4 on the 3rd line, F4 on the 3rd space, E4 on the 2nd space, D4 on the 2nd line, C4 on the 1st space, Bb3 on the 1st line, A3 on the 1st space, G3 on the 1st line, F3 on the 1st space, E3 on the 1st line, D3 on the 1st space, C3 on the 1st line, Bb2 on the 1st space, A2 on the 1st line, G2 on the 1st space.

