

Orange

Flute

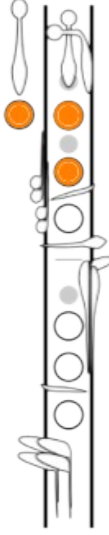
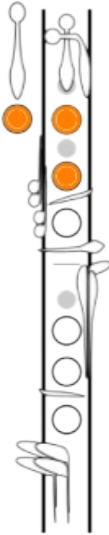
A musical staff for a flute part in 4/4 time. The key signature has one flat (B-flat). The melody consists of four measures: Measure 1 has a quarter note on G4; Measure 2 has a half rest; Measure 3 has a quarter note on G4; Measure 4 has a half rest. The staff ends with a double bar line.

A fingering diagram for the first measure, showing the flute's fingerings for the note G4. The diagram is oriented vertically and includes a treble clef, a B-flat key signature, and a 4/4 time signature. The fingerings are: index (1), middle (2), ring (3), and thumb (4) on the keys.

A fingering diagram for the third measure, showing the flute's fingerings for the note G4. The diagram is oriented vertically and includes a treble clef, a B-flat key signature, and a 4/4 time signature. The fingerings are: index (1), middle (2), ring (3), and thumb (4) on the keys.

Orange

Clarinet



Orange

Alto Sax

Musical staff for Alto Sax in 4/4 time with a key signature of one sharp (F#). The staff contains four measures: the first measure has a quarter note on G4, the second and fourth measures have whole rests, and the third measure has a quarter note on A4.

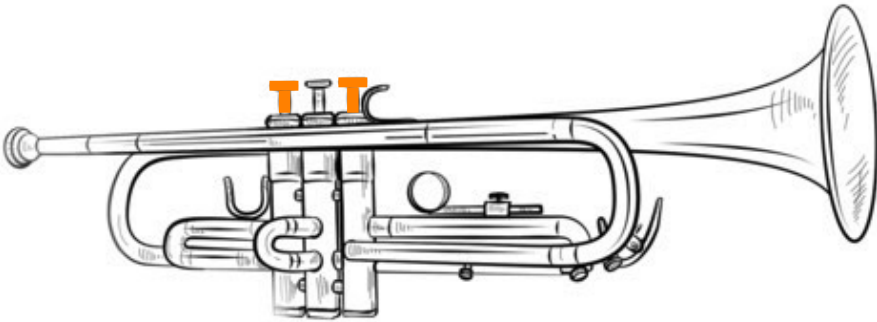
Fingering diagram for the first measure (G4): Left hand (top) has index (1) on G, middle (2) on F#, and ring (3) on E. Right hand (bottom) has index (1) on G, middle (2) on F#, and ring (3) on E.

Fingering diagram for the third measure (A4): Left hand (top) has index (1) on A, middle (2) on G, and ring (3) on F#. Right hand (bottom) has index (1) on A, middle (2) on G, and ring (3) on F#.

Orange

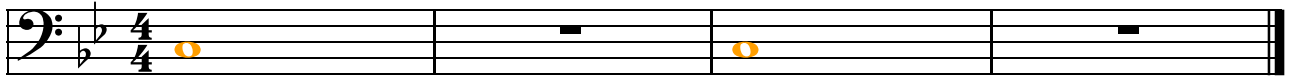
Trumpet

13 13



Orange

Trombone



6

6



Orange

Bells

Musical notation for Bells in 4/4 time. The notation includes a treble clef, a key signature of one flat (B-flat), and a sequence of notes: a half note G4, a whole rest, a half note F4, and a whole rest.

