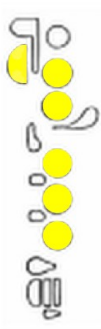
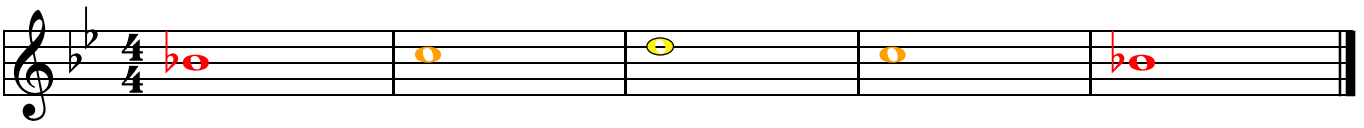


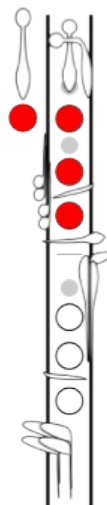
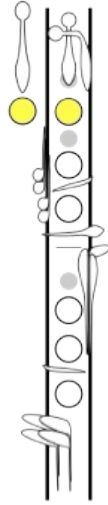
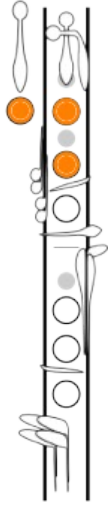
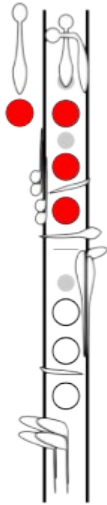
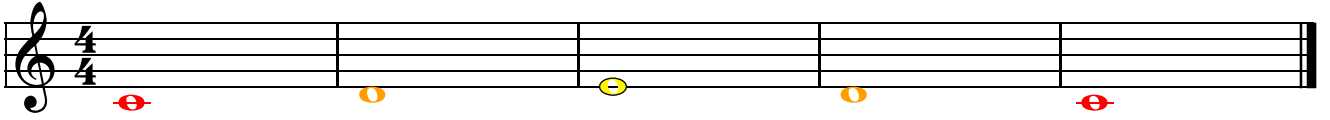
In a row

Flute



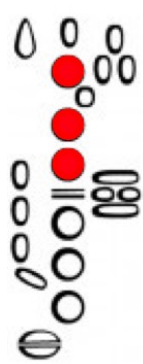
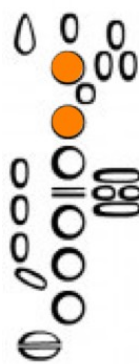
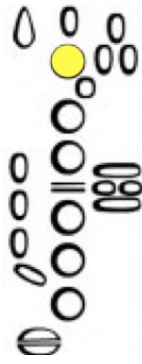
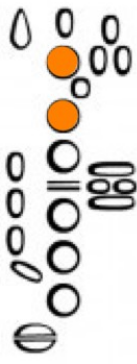
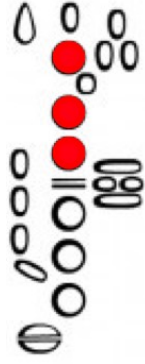
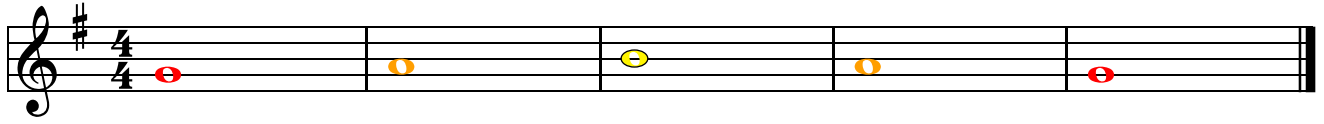
In a row

Clarinet



In a row

Alto Sax



In a row

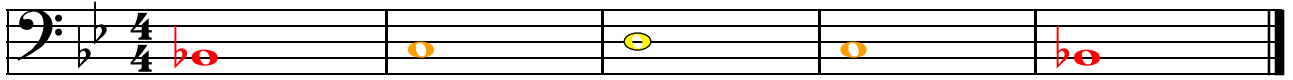
Trumpet

A musical staff for Trumpet in 4/4 time. The staff contains five measures. The notes and their fingerings are: Measure 1: Red note on the first line (C4) with a red '0' below it. Measure 2: Orange note on the second space (D4) with an orange '13' below it. Measure 3: Yellow note on the second space (D4) with a yellow '12' below it. Measure 4: Orange note on the second space (D4) with an orange '13' below it. Measure 5: Red note on the first line (C4) with a red '0' below it.



In a row

Trombone



1

6

4

6

1



In a row

Bells

Musical notation for a bell sequence in 4/4 time. The notation consists of five measures on a single staff with a treble clef and a key signature of one flat. The notes are: Measure 1: two red half notes (C4 and B3); Measure 2: one yellow whole note (A3); Measure 3: one yellow whole note (G3); Measure 4: one yellow whole note (F3); Measure 5: two red half notes (E3 and D3).

