

Hot Cross Buns

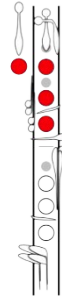
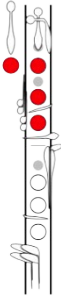
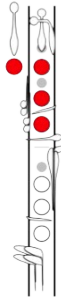
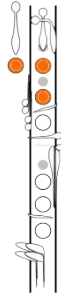
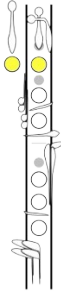
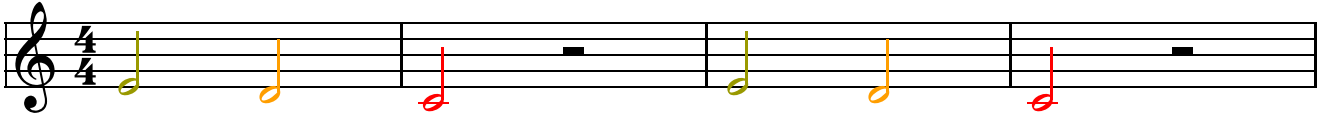
Flute

Handwritten musical notation for the first system of 'Hot Cross Buns' for flute. The staff is in treble clef, key signature of one flat (Bb), and 4/4 time. The melody consists of six measures: G4 (quarter), A4 (quarter), Bb4 (half), G4 (quarter), A4 (quarter), Bb4 (half). Below the staff are six fingerings for each note, with yellow and red dots indicating finger positions.

Handwritten musical notation for the second system of 'Hot Cross Buns' for flute. The staff is in treble clef, key signature of one flat (Bb), and 4/4 time. The melody consists of ten measures: Bb4 (quarter), Bb4 (quarter), Bb4 (quarter), Bb4 (quarter), G4 (quarter), A4 (quarter), Bb4 (half), G4 (quarter), A4 (quarter), Bb4 (half). Below the staff are four fingerings for the notes Bb4, G4, A4, and Bb4, with yellow and red dots indicating finger positions.

Hot Cross Buns

Clarinet



Hot Cross Buns

Alto Sax

Musical staff for Alto Sax, measures 1-5. The staff is in treble clef, key of D major (one sharp), and 4/4 time. The notes are: G4 (yellow), A4 (orange), B4 (red), G4 (yellow), A4 (orange), B4 (red). There are rests in measures 3 and 5.

Fingering diagram for G4: thumb down, index down, middle down, ring down, pinky down, left hand up, right hand up.

Fingering diagram for A4: thumb down, index down, middle down, ring down, pinky down, left hand up, right hand up.

Fingering diagram for B4: thumb down, index down, middle down, ring down, pinky down, left hand up, right hand up.

Fingering diagram for G4: thumb down, index down, middle down, ring down, pinky down, left hand up, right hand up.

Fingering diagram for A4: thumb down, index down, middle down, ring down, pinky down, left hand up, right hand up.

Fingering diagram for B4: thumb down, index down, middle down, ring down, pinky down, left hand up, right hand up.

Musical staff for Alto Sax, measures 6-10. The staff is in treble clef, key of D major (one sharp), and 4/4 time. The notes are: B4 (red), A4 (orange), G4 (yellow), F4 (red), E4 (red), D4 (red), C4 (red), B4 (red), A4 (orange), G4 (yellow), F4 (red), E4 (red), D4 (red), C4 (red), B4 (red), A4 (orange), G4 (yellow). There is a rest in measure 10.

Fingering diagram for B4: thumb down, index down, middle down, ring down, pinky down, left hand up, right hand up.

Fingering diagram for A4: thumb down, index down, middle down, ring down, pinky down, left hand up, right hand up.

Fingering diagram for G4: thumb down, index down, middle down, ring down, pinky down, left hand up, right hand up.

Fingering diagram for A4: thumb down, index down, middle down, ring down, pinky down, left hand up, right hand up.

Fingering diagram for B4: thumb down, index down, middle down, ring down, pinky down, left hand up, right hand up.

Hot Cross Buns

Trumpet

5

Yellow	Yellow	White	Orange	White	Orange	Red	Red	Red
Yellow	Yellow	White	Orange	White	Orange	Red	Red	Red
			Red	Red	Red	Orange	White	Orange
Yellow	Yellow	White	Orange	White	Orange	Red	Red	Red

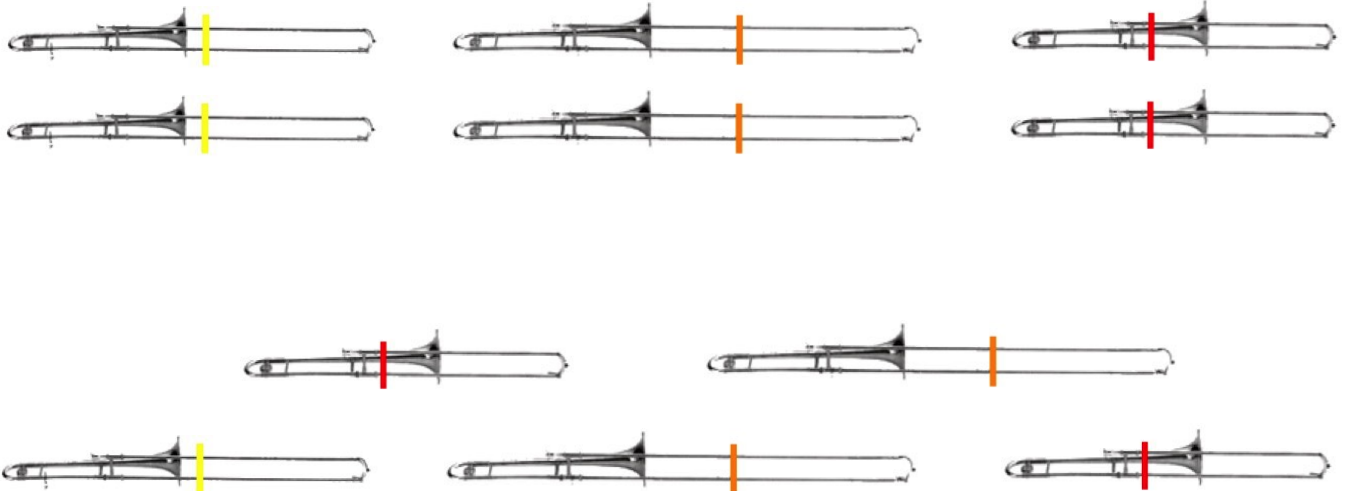
Hot Cross Buns

Trombone

4 6 1 4 6 1

5

1 1 1 1 6 6 6 6 4 6 1



Hot Cross Buns

Bells

The first staff of music is in 4/4 time, key of B-flat major. It contains four measures. The notes are: G4 (half), A4 (quarter), Bb4 (quarter), and G4 (half). The notes are color-coded: G4 is green, A4 is orange, Bb4 is red, and G4 is green. There are rests in the second and fourth measures.

5

The second staff of music is in 4/4 time, key of B-flat major. It contains four measures. The notes are: Bb4 (quarter), Bb4 (quarter), Bb4 (quarter), Bb4 (quarter), G4 (quarter), A4 (quarter), G4 (quarter), and Bb4 (quarter). The notes are color-coded: Bb4 is red, G4 is green, A4 is orange, and Bb4 is red. There is a rest in the fourth measure.

