

# Half the time

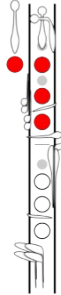
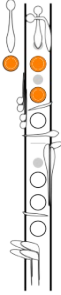
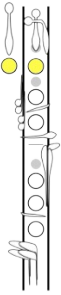
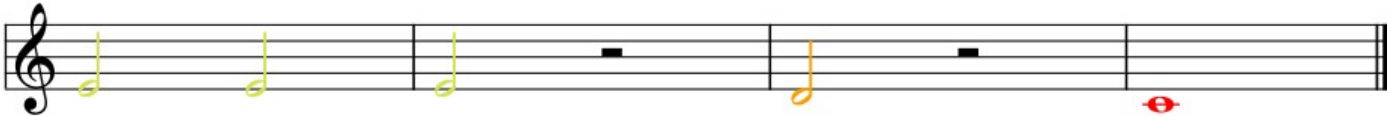
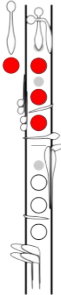
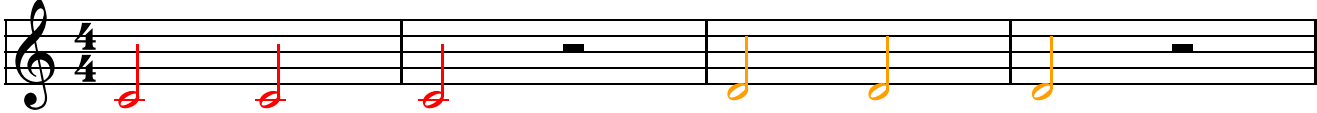
Flute

The first staff shows a 4/4 time signature with a key signature of one flat (B-flat). The notes are: B-flat (red), B-flat (red), B-flat (red), a whole rest, B-flat (orange), B-flat (orange), and B-flat (orange). Below the staff are two sets of fingerings: the first set for the first three notes (red) and the second set for the last three notes (orange).

The second staff continues the melody with notes: B-flat (yellow), B-flat (yellow), B-flat (yellow), a whole rest, B-flat (orange), a whole rest, and B-flat (red). Below the staff are three sets of fingerings: yellow for the first three notes, orange for the fourth note, and red for the final note.

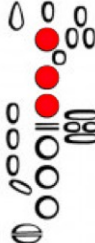
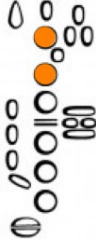
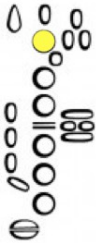
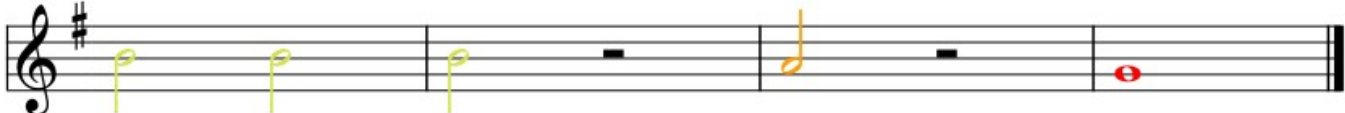
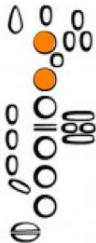
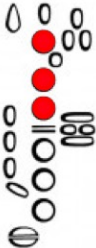
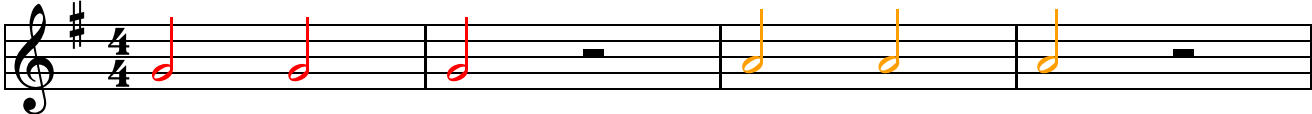
# Half the time

Clarinet



# Half the time

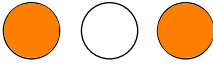
Alto Sax



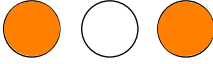
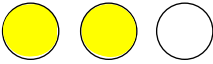
# Half the time

Trumpet

0 0 0 13 13 13

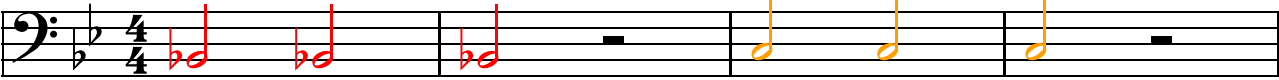


12 12 12 13 0



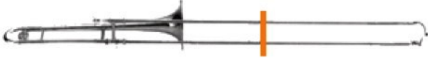
# Half the time

Trombone



1 1 1

6 6 6



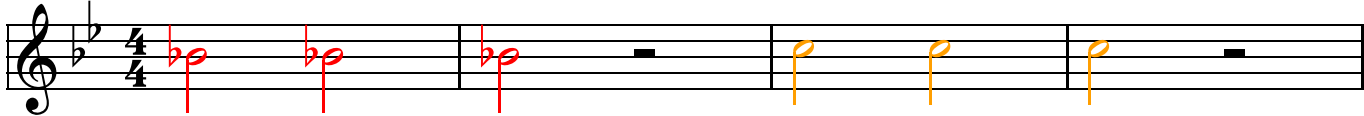
4 4 4

6 1



# Half the time

Bells



5

